

SurvCE 2.50 Topics
 March 5, 2009

1. **Symbols** (need trees and symbols)

Show how to remove Blocks

Show how to “show fcl only” using SCDOT1, RdZandy.fcl

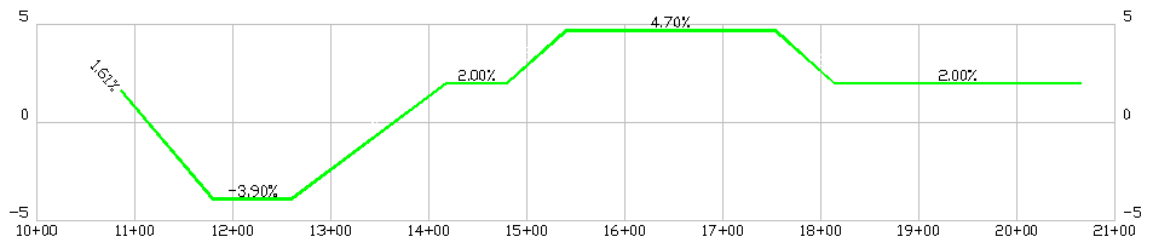
Show how to draw a tree with a new entry

2. **Grade Table** (\NVDOT\Ramp1.crd)

Left side: 10+53.28, 36.22', then 11+96.15, 20.00', then 20+66.86, 20.00'.

Right side: 10+85.45, 32.50', then 13+61.11, 32.50', then 1378.61, 30.00', then 1381.25, 28.00', then 1608.08, 16' then 2066.86, 16.00'.

Right side: 10+85.45, 1.61%, 11+80, -3.9%, 12+60 at -3.9%, 14+18 at 2%, 14+80 at 2%, 15+40 at 4.7%, 17+54 at 4.7%, 18+14 at 2%, 20+66 at 2%, shown below.



In Carlson Civil, load NVDOT-RAMP, show in 3D with lane widening

3. **Pipes in Cross Section** (\SCDOT\Scdot1.crd). **Stake by Cross Section.** Show import methods (two .dat files by Geopak and .csv by Columnar for pipes)

Zone: around station 25+00, pipes both sides

Setup: 103 BS: 108, Point 13 is around station 36+00

4. **Elevation Difference by LandXML Import** (\SCDOT\scdot1.crd)

Map Screen, DTM from LandXML, shows border

GPS Simulation from Point 13

5. **Majority of DOT Feature Code Lists** (\NCDOT\Nc1.crd)

NC1.crd and all NCDOT.fld and special codes.

Erase and Redraw linework.

List and show Layer Roads, and

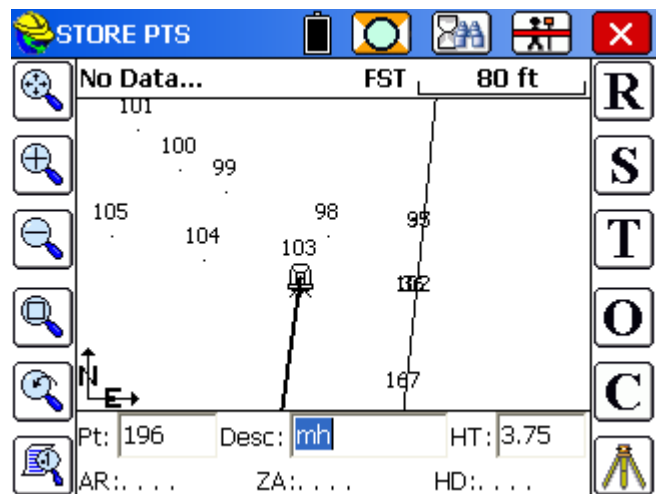
Change Color of Layer Roads

6. **ASCII Import by Set Button.**

Points in \NCDOT, new file

MH360, SEG

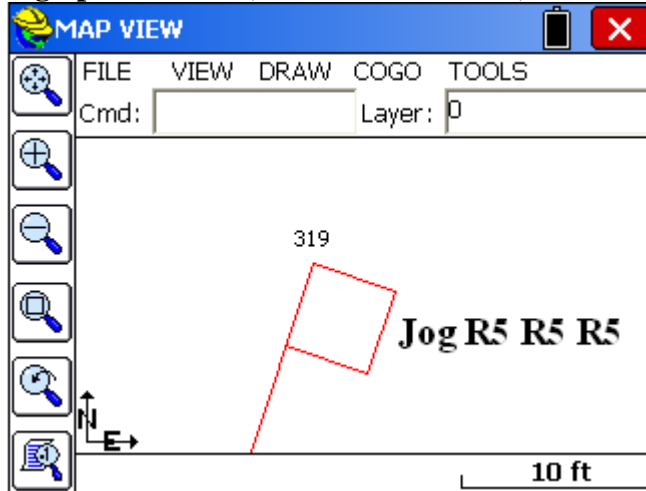
7. **Lock Button and Track Button Improvements**



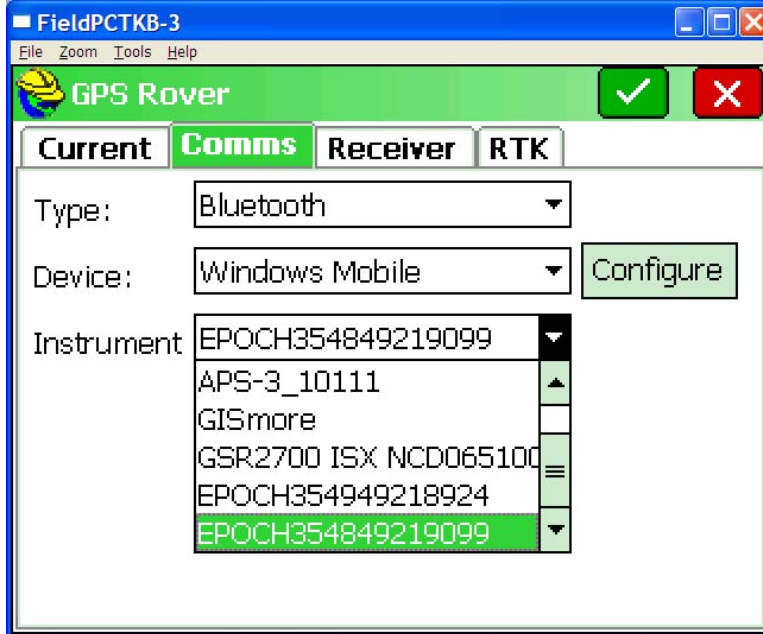
8. **Line Details**, any file
Show in Configuration where it is enabled

9. **Feature Code Pattern**
Zorro style on 3 points by GPS methods

10. **Jog Special Code** (for entered distances)



11. **New Bluetooth Mechanism: Surveyor+ maintains connection while suspended. SurvCE resumes after suspend even in a live screen update.**



12. **Stake Any Offset at Slope from Specific Point** (Stake Points)

Turn on Point by Direction within Stake Points

Set Direction by Points (320,322)

Use right arrow key to choose Offset method as opposed to “on-line” method.

Basically does an L shape as options (up line itself, or off to L or R from 1st pt)

13. Improved Station Equations and RR method across all Roding Commands

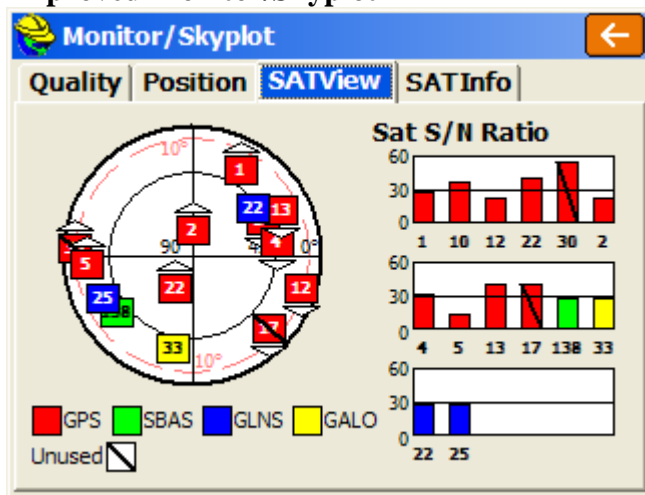
Input-Edit Profile
Input-Edit Template Series

14. Improved Imports within Road, Utilities

SMI Chain at all levels
TDS Roding Files Import AND Export (RD5)
Geopak and Caice Section Imports
Clip Section Files (Spain, Portugal)

15. Raw File SDMS Output and SDMS-Style Coding

16. Improved Monitor/Skyplot



17. Down below is an additional list of already completed features for 2.50. Let me highlight some that might be easy to show in a webinar:

1. Advanced Point Averaging for GPS - Go to the A for Average and press "Use Advanced GPS Averaging"
2. Set Azi in Resection - you can show this option even in Manual TS mode.
3. Smart ComboBox in Store dialog for storing target heights used by the user
4. Jump to "Robotics" from the Hardhat in Backsight check.
5. Change target type from the Hardhat in Backsight check. You can set to Leica TPS direct to show this (also will work for showing Robotics jump).
6. Change target type from the Hardhat in Resection. We already had a Robotic button on the screen in this feature.
7. Point Notes paired with codes and points for easy recall and storing
8. Expanded Point Details to allow editing a rod height and description for point or point group
9. New instruments supported, Leica "Flexline" - the TP0x series, Magellan ProMark 500 & ProFlex 500, Javad with internal modem, new CST Berger total station, Hemisphere Eclipse and Crescent GPS, also new NavCom 2110.

Other Features that we have already:

Finnish grid projections

Turn to Point in Resection

Malaysian coordinate systems

Direct dwg import (done for ARM processors only)

Monitor/Skyplot rising/falling satellite status

Restore Layer

Reflectorless in Backsight/Resection/Set Collection

Road Network file improvements

Display of divided highway from section-based RNF files from Carlson Civil

Loading section file with subgrades out of road network (*.rnf) – Stake Road

Import MMH360 file format (done)

Jpeg files for Image – and tifs!

Master Centerline

Turn Satellites on/off for Altus and Septentrio

Displaying unlimited number of satellites in Portraitview. Limit to 24 for Landscape. Previous limit was 18 for all modes.