



*Don't you wish PC/Data Collector
communications were this easy?*

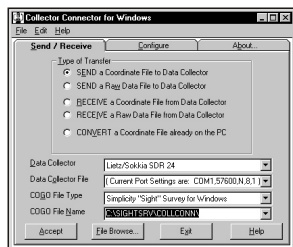
Collector Connector for Windows

Makes your wishes come true!

Finally, a low cost replacement for high-priced OEM (Original Equipment Manufacturer) communications software! **Collector Connector** provides you with accurate PC to data collector communications all wrapped up in a quick, convenient, menu-driven, easy to use package.

Collector Connector not only saves you money, but it allows you to easily download and upload ASCII data from your data collector to your PC through your computer's serial port, transferring both raw data files and coordinate lists! (Note: *Sight Survey* uses only coordinate files, not raw data files.)

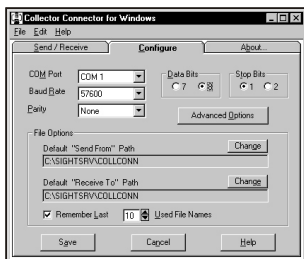
Automatically format downloaded coordinate files for use with your favorite COGO program! Convert data collector coordinate files that are already on your PC into files that are compatible with your favorite COGO program! Select data collector and file types from a menu!



Compatible with Win 3.1/95/98/ME/XP/2000 & NT, **Collector Connector** can run as a stand-alone product, or as an add-on module to "Sight" Survey, where it is accessed using the **Add-Ins** pulldown menu.

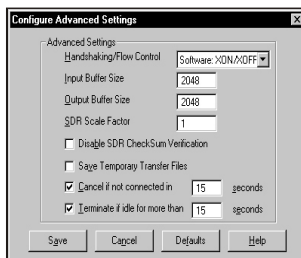
With **Collector Connector** you can:

- MERGE an incoming file with an existing COGO data file, with full point-overwrite protection;
- Send (export) a RANGE of points to the data collector, instead of sending the entire file.
- Easily ABORT File Transfers by clicking on the [Abort] button during the transfer.
- Copy or delete an existing file through pulldown menu options.
- Specify separate Default File Paths for the "Receive To" and "Send From" paths, allowing much easier access to the data files.
- Select files using File Selection fields with full Windows File Browser capabilities. These File Selection fields are a drop down combo box which saves up to 20 of your last-used filenames so you can select them without retyping them.
- Use the serial ports COM 1, COM 2, COM 3, or COM 4, at baud rates up to 115200 (depends upon your data collector's capabilities).



Collector Connector also lets you tweak Advanced Communications options to eliminate overflow errors, speed up file transfers, and improve control over file transfers. You can:

- Modify Input & Output Buffer Sizes;
- Modify Handshaking or Flow Control of the transfer;
- Enter an SDR Scale Factor for Lietz/Sokkia data collectors;
- Use an improved SDR CheckSum File Verification algorithm for Lietz/Sokkia file transfers, giving you the ability to shut off the verification for a faster transfer (or if the new algorithm is not compatible with your collector);
- Save temporary files that get created during a Receive or Send, giving you a backup copy of the data file to be used as an audit trail;
- Cancel the file transfer if a connection is not made within a specified # of seconds; Automatically end the file transfer if communication stops for a specified # of seconds.



Fast, accurate, flexible and simple to operate. All the qualities you want in your data collector communications software, in one very affordable program. Makes sense, doesn't it?

SUPPORTED DATA COLLECTORS

D'Zign HP48 Survey Packet 1 (NE); D'Zign HP48 Survey Packet 1 (NEZD); Lietz/Sokkia SDR 2, 20, 22 & 24; Nikon (Lietz emulation); Pentax SC-5 (Lietz emulation); SMI HP 48 BCE, SC/SCE, AC/ACE, DC/DCE, or CVCE; Sokkia SDR 31 or 33 (4 char. numeric point IDs); Sokkia SDR 31 or 33 (14 char. alpha point IDs); SURVcalc HP 48 SX/GX; TDS HP 48; Topcon FC-4; Topcon FC-48; Trimble TDC1, TDSC1 (Sokkia emulation); and Wild GRE-3 (Lietz emulation).

SUPPORTED FILE FORMATS

Simplicity "Sight" Survey for Windows; Simplicity Survey 3.0, Lite, & 4.0; Simplicity Survey! - Ver. 2; Direct transfer (send/receive only); ASCII custom formats; Autocogo; BenchMark (ASCII); Bischoff; C & G (ASCII); CivilComp CC-Surv Version 3 & 4; CivilSoft Cogo PC Plus; Collier Version 4 & older; DCA (generic import); GEM (SDF format); Generic

CADD 6 Batch (receive/convert only); Houseman PC-Cad; Lewis & Lewis; LI Contour; Maptech; Micromate (send only); MTI 3000; NOAA State Plane Record; PacSoft; Plus III (ASCII); Simplicity CogoMate 2.x (receive/convert only); Simplicity DigiMate (send only); Star*Net Coordinate File (send only); Surv-A-Soft Version 4 & older; Surveyor II; SurveySoft; Technical Advisors; Traverse PC; and WildSoft (ASCII).

**90
Day***

Try Collector Connector for 90 Days. If for any reason you don't like it, we'll buy it back!

Money Back Guarantee!

*** Shipping charges not refundable.**

**Collector Connector
for Windows is ONLY
\$199!**

*plus shipping & handling
(Only \$159 + s/h when purchased
with "Sight" Survey!)*

**To Order, Call Today!
(800) 777-7978**

**Monday - Friday, 8 am to 5 pm Eastern.
Outside the US & Canada, call (828) 338-2516
or fax (606) 564-6422.**

**In Puerto Rico & the Caribbean, call
MAREL BAYAMON, INC. (809) 785-2240.**



A Division of
Carlson

**102 West Second, Ste. 200
Maysville KY 41056**

www.simsystems.com