

# When you need more power...

Advanced COGO & CAD for Windows  
from Simplicity Systems, Inc.

## What do you look for in a COGO program?

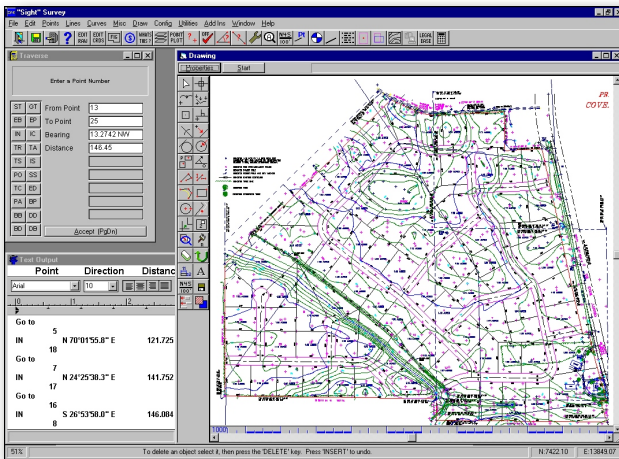
*Speed? Accuracy? Ease-of-use? Or perhaps you're looking for a full array of COGO and CAD features...*

*Who produced the software? Does the company matter? Are they solid and dependable, with a proven track record as a leading supplier of surveying software?*

*What about support? Will you reach a live technician, or get lost in "hold heaven..."*

*If you're suffering from eye strain, look no further.  
You're holding the answer right here in your hands...*

## "Sight" Survey 3.0<sup>TM</sup> Professional for Windows



### WHAT IS "SIGHT" SURVEY 3.0?

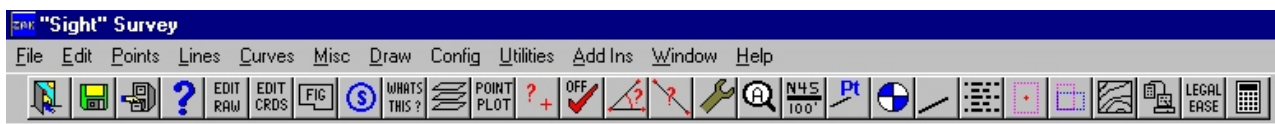
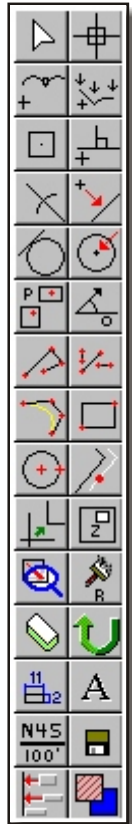
"Sight" Survey 3.0 is a fully three dimensional coordinate geometry package containing *all* the tools you need to solve your day to day COGO problems! With a virtually unlimited capacity for points (*over 3.5 trillion*), "Sight" Survey 3.0 is capable of projects from the smallest lot survey to the largest subdivision. And, if you're wondering about the word "Site" being misspelled as "Sight," rest assured we didn't misspell it. Why? Because "Sight" Survey is more than just a COGO program. It includes a full-featured CAD program that allows you to compute your data and produce your drawing at the same time! *With "Sight" Survey 3.0, you can SEE your work in progress!*

### EASE OF USE

Meticulous attention to the user interface makes "Sight" Survey's ease of use stand out. Not only is it easy to learn, but it's also easy to remember. "Sight" Survey solves COGO problems the way you think!

Complete data entry prompting means that you will never see an unexplained data prompt. Entry error checking will prevent you from entering data in a wrong format. Bearing and distance recall, point name and offset tables, a pop-up calculator, and data file selection menus are but a few of the many tools available. Not only that, but the Data Entry window is always on the screen so you can jump around from field to field within the window, making it easy for you to fix data entry errors.

Worried about complicated routine codes? Forget it! Even though "Sight" Survey 3.0 includes over 150 COGO commands and over 200 CAD commands, we use easy to remember codes like **TR** for Traverse, **IN** for Inverse, and **ZA** for Zoom All. But you really don't even need to remember the codes! Just use your mouse or function keys to access any of the 10 COGO menus or 9 CAD menus and select a routine from there. You may also select from 118 commonly used routines by clicking on the 78 toolbar buttons, including your own customizable toolbar onto which you may assign up to 20 of the COGO routines!



# When you need more power...

Advanced COGO & CAD for Windows  
from Simplicity Systems, Inc.

## COMPATIBILITY

Realizing that there may be times when you need to exchange data with colleagues who are not using a Simplicity product, we also provide something that our competitors won't give you.... **Compatibility!**

**Survey 3** and **Survey 4** files, as well as **COGO** data files from over **30 other vendors**, will be seamlessly read and written by **"Sight" Survey 3.0**.

Drawing files are directly compatible with **TrueCAD** and **AutoCAD**, and DXF file exchange allows you to exchange drawings with virtually every other CAD program available today!

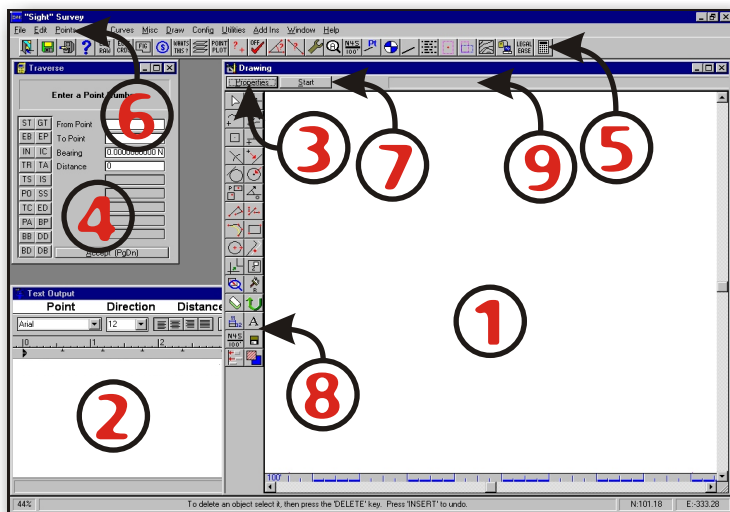
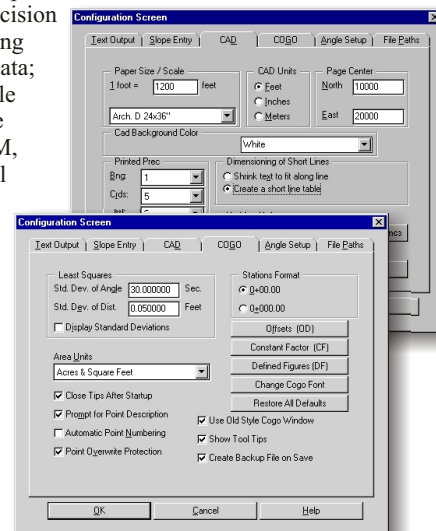
**"Sight" Survey 3.0** is also **fully metric**, including support for metric stationing, area calculations in square meters and hectares (or cuerdas) and angular entries in grads.

## VALUE - SINCE 1983!

Power, flexibility, ease of use, compatibility. It all means nothing if it's not priced fairly. Since we began in 1983, Simplicity has worked to provide **"Satisfaction Guaranteed"** solutions with your bottom line in mind. Offering affordable, well thought out applications that save you time and make you money, *that's value!*

## FLEXIBILITY

**"Sight" Survey 3.0** has 23 **Configuration Menus** to customize operating and CAD parameters! A wide range of options exist to tailor every aspect of **"Sight" Survey** to your liking, including: angular input and output defaults; printed precision of all text and drawing data; printed input data; automatic slope angle prompting and slope reduction type (EDM, stadia, leveling, total station, etc.), least squares adjustment parameters, user-customizable tool bar and more!



## THE "SIGHT" SURVEY SCREEN

Shown to the left is an actual **"Sight" Survey 3.0** screen capture. The right-side window ( **1** ) is the **Drawing** window in which elements (lines, points, etc.) are drawn as they are computed. The viewing scale resizes dynamically as the drawing changes. The lower left window ( **2** ) is for **Text Output**. This window is fully scrollable so you can review the calculations for your entire job, no matter when the work was performed. When you access the window directly, it pops to the display foreground. The **Properties** window (not shown but accessed by button **3** ), contains drawing settings such as line color, text font & size, etc. The upper left window ( **4** ) is for **Data Entry**. All prompts and instructions change according to the routine selected, but all the prompts specific to the routine are shown at once. You may use your mouse or keyboard to jump around the prompts. The **Top Toolbar** ( **5** ) at the top of the screen contains 47 commonly used COGO and general program functions. The **Menu Bar** ( **6** ), with pull-down menus for COGO, lies above the toolbar. The **Start Button** ( **7** ), opens a fly-out menu containing nine CAD menus. The **CAD Toolbar** ( **8** ), accesses 51 commonly used CAD functions. The **CAD Command Line** ( **9** ), displays prompts used by the CAD functions.

**90**  
Day Money Back Guarantee!  
Shipping charges  
are not refundable.

**"Sight" Survey 3.0**  
**Professional**  
**is only \$499!**  
(plus shipping & handling)



A Division of  
**Carlson**

102 West Second, Ste. 200  
Maysville KY 41056

[www.simsystems.com](http://www.simsystems.com)

**Buy**  
**"Sight" Survey 3.0**  
**Today!**

**1-800-777-7978**

When you call, ask about our other fine products  
for COGO, Earthwork, Legal Descriptions,  
Data Collection, and more!

Call Monday - Friday, 8am to 5pm Eastern time.  
Outside the US and Canada, call (828) 338-2516  
or fax (606) 564-6422  
In Puerto Rico & the Caribbean, call MAREL  
BAYAMON, INC. (809) 785-2240.

# "Sight" Survey 3.0 Professional - Feature Chart

## TOP Toolbar

Shown to the right are the buttons from the Top Toolbar. Many buttons access two functions, one with a left-click of the mouse, and another with a right-click. (Note: The Top Toolbar layout is actually horizontal, but the illustration here is vertical in order to more easily list each button's functions.)



Exit / Configure File Paths  
Save a Job / Save Job As  
New Job / Open Job  
Status / System Info  
Edit Raw Data  
Edit Coordinates / List Coordinates  
Define Figures  
Set Offsets / Set Constant Factor  
Query Entity / Selection Filter  
Layer Control / Layer Override  
Point Plot / Print Coordinates  
Get a Point / Get a Point String  
Pick Points  
Measure an Angle / Angle Config



Measure a Distance / Slope Config  
CAD Config / COGO Config  
Scale Drawing to Fit / Zoom Scale  
Dimension Lines  
Add End Point Labels  
Add Symbols / View Symbols  
Draw Lines  
Text Output / Text Output Config  
Re-Center Paper / Show Paper Border  
Paper Orientation  
Contour It!  
Collector Connector\* Send/Receive  
LegalEase\* / Write a Legal File  
Pop-up Calculator

\*Optional module required.

## COGO Menus

Listed below are the functions available through the use of "Sight" Survey's pull-down COGO menus. The command lists are arranged by menu.

### File Menu

New Job  
Open Job  
Save Job  
Save Job As  
Print Preview  
Adjust Margins  
Print Text  
Plot Drawing - Fit to Page  
Plot Drawing to Scale  
Print Coordinates  
Import Coordinates  
Import Text  
Import Merge Coordinates  
Export Coordinates  
Export Text  
Copy Job  
Delete Job  
Last Used Job List  
Exit

### Edit Menu

Undo  
Cut  
Copy  
Paste  
Edit Coordinates  
Clear Text Output  
Edit Original Raw Data

### Curves Menu

Inverse Curve  
Obtuse Curve  
Three Point Curve  
Inscribe Arc -  
    Tangent from the PC  
    Tangent from the PI  
    Non-Tangent from PC  
    Tangent from PC with Offsets  
    Tangent from PI with Offsets  
    Non-Tangent from PC with Offsets  
Traverse Arc  
Traverse Arc with Offsets  
Curve Offset  
Best Fit Curve

### Points Menu

Enter and Assign  
Enter Elevation  
Identify Point  
Enter Station  
Start At  
Go To Point  
Enter Backsight Point  
Enter Backsight Bearing  
Point Plot  
List Coordinates  
Blank Point Scan  
Renummer Points  
Copy Block of Points  
Clear Coordinates  
Clear Point Names  
Clear Point Stations  
Define Figures  
Edit Default Descriptions

### Lines Menu

Inverse  
Field Data Inverse  
Radial Inverse  
Deflection Inverse  
Radial Stake Out  
Side Shots  
Offset  
Traverse  
Traverse with Offsets  
Traverse Close  
Balance Angles  
Compass Rule Adjustment  
Crandall Rule Adjustment  
Transit Rule Adjustment  
Least Squares Adjustment  
Enter Diagonal  
Inverse with Stations  
Traverse with Stations  
Traverse Right of Way  
Best Fit Line

### Add Ins Menu

Access to Contour It!  
Access to Collector Connector  
Access to LegalEase

### Misc Menu

Arc-Arc Intersection  
Arc-Bearing Intersection  
Arc-Distance Intersection  
Bearing-Arc Intersection  
Bearing-Bearing Intersection  
Bearing-Distance Intersection  
Distance-Arc Intersection  
Distance-Bearing Intersection  
Distance-Distance Intersection  
Perpendicular Offset  
Offset Intersection  
Line Station and Offset  
Arc Station and Offset  
Area Printout  
Point to Point Area  
Pre-determined Areas -  
    2 Sides Parallel  
    Line Through a Point  
    Radial Sides  
    2 Lines Through a Point  
Measure a Distance  
Measure an Angle  
Coordinate Transformations -  
    Rotation Pt & Angle known  
    Two Pts in Each System known  
    US Survey Feet to Meters  
    US Survey Feet to Int'l Feet  
    Meters to US Survey Feet  
    Meters to Int'l Feet  
    Int'l Feet to Meters  
    Int'l Feet to US Survey Feet  
Pop-up Calculator

### Configuration Menus

Text Output  
Slope Entry  
CAD  
COGO  
Angle Setup  
File Paths  
Side Tool Bar Buttons  
Adjust Screen Colors  
Show Status Bar  
Show Tool Bar  
Check Registration

### Draw Menu

Snap Modes  
Select Object  
Select Distance  
Select Bearing  
CAD to COGO  
Get an Arc  
Get a Line  
Get a Point  
Get a Point Series  
Quick Pick CAD->COGO  
Draw Supplemental -  
    Short Line Table  
    Curve Table  
    Scale Bar  
    North Arrow  
    Coordinate List  
    Component Table  
Label an Angle  
Layer Override  
Change Paper Orientation  
Show Paper Border

### Utilities Menu

Circular Curves  
Curve by Deflections  
Curve by Tangent Offsets  
Curve by Chord Offsets  
EDM Slope Reduction  
Stadia Reduction  
Spiral Curve Solution  
Vertical Alignment  
Universal Triangle

### Windows Menu

User Arrangement #1 & #2  
Set User Arrangement #1 & #2  
Cascade  
Tile  
Select Window

### Help Menu

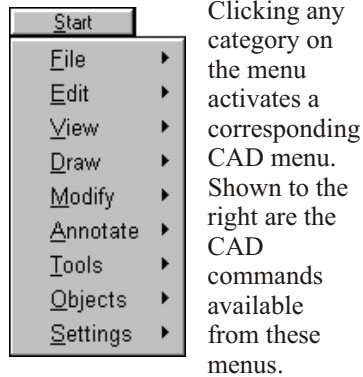
Contents  
Current Topic  
Search for Help On  
How to Use help



# "Sight" Survey 3.0 Professional - Feature Chart

## START Button - CAD Menus

Clicking the **Start** button drops down a listing of CAD menus.



- File:** New Drawing; Open Drawing; Load Drawing; Save Drawing; Save Drawing As; Save Settings; Load Symbol File; Import ASCII Text; Import Bitmap; Export ASCII Text; Print; Zoom Print; Print Setup; Repair Drawing File; Purge Redundant Elements; Execute Macro; Load Title Block.
- Edit:** Undo; Redo; Cut; Copy; Paste; Delete; Select; Select by Polygon; Selection Filters; Clear Selection; Select Normal; Select Nodes; Move to Front; Move to Back.
- View:** Zoom Window; Zoom Last; Zoom Next; Zoom All; Zoom Sheet; Zoom Scaled; Zoom Selected; Zoom View; Define Zoom View; Magnify; Demagnify; Pan; Long Pan; Redraw; Split Window; Join Window; Clear Drawing Window.
- Draw:** Line (Chained); Lines (Pt to Pt); Point; Rectangle; Arc 3 Point; Arc Radius; Circle; Circle Diameter; Circle 2 Point; Line Arc Line; Parallel Line; 1 Parallel Element; Around a Perimeter; Ellipse; Part Ellipse; Circular Spline; Cubic Spline; Polyline; Polygon; Symbol; Sketch; Draw Building Location.
- Modify:** Stretch; Move; Move Point; Mirror Image; Scale; Repeat; Drop; Rotate; Trim; Fillet; Chamfer; Divide/Extend; Join Lines; Cut and Rub; Snip; Move Selected to New Layer; Copy Selected to New Layer; Ellipse2Arcs.

**Annotate:** Text Line Entry; Arc Text; Edit Text; Move Text; Scale Text; Change Text Parameters; Set Alignment; Align; Horizontal Dimension; Vertical Dimension; Slope Dimension; Angular Dimension; Radial Dimension; Survey Dimensions; Ordinate Dimension; Dimension Arc; Edit Dimension Properties; Cut Dimension Line; Alter Dimension; Add Arrow; Add Balloon; Add/Rem Text Bubble; Enter Hatch/Solid Fill; Adjust Existing Hatch; Draw All Hatch; Draw Selected Hatch; Hatch -> Lines; Label Coordinates.

**Tools:** Jump to Grab All Cursor; Jump Grid; Jump Any Intersection; Jump Point; Jump Circle Center; Jump Near Element; Last Fixed; Mid Point Jump; Ratio Jump; Move to Coordinates; Polar Move; Show Nodes; Dump Data; Grid; Measure; Polygon Area; Query Entity; Tidy Polygons; Expand.

**Objects:** Begin New Object; Group into Object; Explode Object; Show Objects; List Objects; Make Symbol; Change Name; Change Parent; Change Hook Point; Update Objects; Select Current Object; Blink Current Object.

**Settings:** Drawing Settings; Unit Settings; View Settings; Re-Center Paper; Snap Mode; Change Magnify Factor; Line Defaults; Polyline Defaults; Parallel Defaults; Set Text Defaults; Dimension Defaults; Surveying Dimensions; Set Arrow Defaults; Set Balloon Defaults; DXF/DWG Conversion Settings; Virtual Memory Settings; Digitizer Settings; Layer Control; Set Current Layer; Set Visible Layers; Delete Layer; Working Layers.

## Properties

Clicking the **Properties** button activates the **Drawing Properties** window. From here, you set the attributes of the various elements that make up your drawing. Click on any item (left column) to open a pull-down menu of available choices.

COGO Drawing Properties	
Object Color	14 - Black
LineType	Continuous
Line Width	01
Label Type	Point Number
Label Place	Quad #1
Label Angle	+0° - Horizontal
End Pt. Sym	Dot
Text Place	Dist / Bng
Text Font	Arial
Text Size	10
Text Color	08 - Blue
Text Bold	No
Text Italic	No
Symbols Lyr	SYMBOLS
Coords. Lyr	COORDINATES
Coord. List Lyr	COORDLIST
Elevations Lyr	ELEVATIONS
ASCII File Lyr	ASCIITEXT
Line Lyr	LINES
Pt. Name Lyr	PTNAMES
Pt. Number Lyr	PTNUMBERS
Points Lyr	POINTS
Sup. Table Lyr	SUPTABLES
Line Annot Lyr	LINETEXT
Station Lyr	STATIONS

## CAD Toolbar

The **CAD Toolbar** contains 30 button that activate 51 different functions. Nearly every button activates two functions, one when clicked with the left button, and another when clicked with the right button.

	Select Entity / Selection Filters		Pan / Long Pan		Zoom Window / Zoom Previous
	Select Nodes / Clear Selection		Move Polar / Move to Coordinates		Redraw Drawing / Zoom Sheet
	Freehand Cursor / Snap Menu		Draw Chained Line / Line Defaults		Delete Selected / Clear Drawing
	Snap to Nearest Point / Snap Menu		Draw Line Segments / Line Defaults		Undo / Redo (drawing operations)
	Grab All Snap Mode / Snap Menu		Draw Polyline / Polyline Defaults		Dimension Menu / Dimension Defaults
	Snap Perpendicular / Snap Menu		Draw Rectangle / Draw Polygon		Add Text / Text Defaults
	Snap to Intersection / Snap Menu		Draw 2 Point Circle / Draw 3 Point Arc		Survey Dimensions / Survey Defaults
	Snap to Nearest Element / Snap Menu		Draw Parallel Lines / Draw Parallel Line		Save Drawing / Open Drawing
	Snap to Tangent / Snap Menu		Trim 2 Elements / Trim One to Another		Align Objects / Alignment Defaults
	Snap to Center Circle or Arc / Snaps		Access Zoom Menu / Zoom All		Hatch & Fill